

## AREA TOWNS

### FROM PAGE 18

draw. Lincoln County has an epigraphic society that is dedicated to exploring pre-Columbian history.

#### Lucas

"Eccentric people and art is what we're about at Lucas," Grassroots Art Center director Rosslyn Schultz said.

Six miles north of Wilson Lake on the Post Rock Scenic Byway, in northeast Russell County, is Lucas, the Grassroots Art capital of Kansas.

It is the site of the Garden of Eden — the late S.P. Dinsmoor's collection of concrete sculptures and his unique home, which turns 100 in 2007. Other grass-roots artists also have called central Kansas home, and Lucas boasts 17 collections in its Grassroots Art Center. Plan to see Miss Deeble's Rock Garden and the Garden of Isis installation by Mri Pilar in seven rooms of the Deeble House.

The town of 430 also boasts Eric Abraham's Flying Pig Gallery and is the home base for Erica Nelson's World's Largest Collection of the World's Smallest Versions of the World's Largest Things Traveling Roadside Attraction and Museum.

Lucas also is the home of Brant's Meat Market. Take a cooler and stock up on homemade Czechoslovakian bologna and pepper sausage, dry-cured bacon and other home-smoked meats.

The K-18 state baseball tournament is played in Lucas every summer.

Great Plains Manufacturing is a major employer in town, along with Heartland Hay.

#### Russell

About an hour west of Salina is Russell, with Deines Cultural Center, the permanent home of the E. Hubert

Deines Art Collection and Wood Engravings.

State and regional artists also are featured.

If you're into the history of oil, this is the place to be. The Oil Patch Museum is along Interstate Highway 70.

Russell was home to former Sen. Bob Dole, R-Kan., and current Sen. Arlen Specter, R-Pa.

The Dole-Specter Conference Center opened in 2003 as a wing of the AmericInn Lodge & Suites.

Fossil Station Museum is a 1907 building that is described as "fortress-like." Gernon House is a restored post-rock limestone building off historic Kansas Street.

The Heym-Oliver House is another historic site on the street. Tours are available.

Several businesses are thriving in Russell's industrial park — the U.S. Energy Partners ethanol plant, wheat gluten plant, and a feedmill that makes aquatic and pet food. Epco harvests and refines carbon dioxide — used in refrigeration and in soft drinks — from the ethanol plant and sells it to other industries, such as food service.

#### Wilson

Located 45 miles west of Salina, Wilson is hailed as the Czech capital of Kansas. It is home to the After Harvest Czech Festival, staged the last Saturday in July.

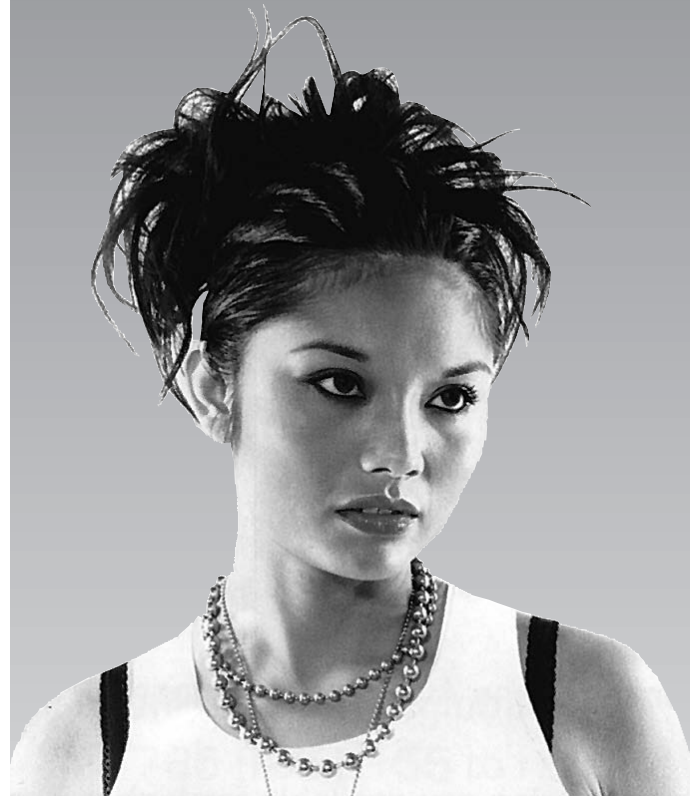
The town of 800 people will play host to 3,000 to 5,000 people during the weekend of parades, games, food, dances and colorful costumes.

The former Wilson Grade School building has been renovated into assisted-living units. The Midland Hotel, with 28 rooms, a restaurant and tavern, reopened in June 2003 after a \$3 million renovation.

The town has gift shops and plenty of dining and lodging.

It's seven miles from Wilson Lake.

# Start Your NEW CAREER TODAY!



- Classes begin every two months
- Services offered to the public

Supervised by instructors



Academy of  
Hair Design

115 S. 5th St. • Salina  
785-825-8155

[www.academyofhairsalina.net](http://www.academyofhairsalina.net)



**Kristi Copas** Broker/Owner  
785-826-6006

- 20 Yrs. Experience
- New Construction
- Residential
- Commercial

Millwood Realty • 1101 S. Ohio, Salina